



# Gunnison Valley Energy Action Planning Process

We, the Gunnison Valley residents, have become increasingly aware of three big energy-related challenges: 1) collectively we send more than \$60 million a year out of this valley for imported\* energy fuels that are becoming both more expensive and more in demand globally; 2) consuming that energy releases greenhouse gasses into the atmosphere that the majority of climate scientists claim are altering the climate, which is generating more extreme weather and will jeopardize our future water supplies; and 3) decreasing our dependence on oil and coal is beneficial to our economy and is a positive advancement towards energy security and independence.

The solution to both the interrelated economic and environmental challenges is to reduce our use of costly energy sources and to replace those carbon-based fuels with more renewable, cleaner, and economically beneficial energy resources. Our valley's four local governments – Gunnison County and the municipalities of Gunnison, Crested Butte and Mt. Crested Butte have all declared this as an important public issue by signing the Energy Efficiency Resolution and creating the Temporary Energy Task Force in September 2007. Now the valley's governments have embarked on an **Energy Action Planning Process, which consists of a Greenhouse Gas Emissions Inventory, an Energy Summit, and Energy Plans** that will be passed and implemented by our communities.

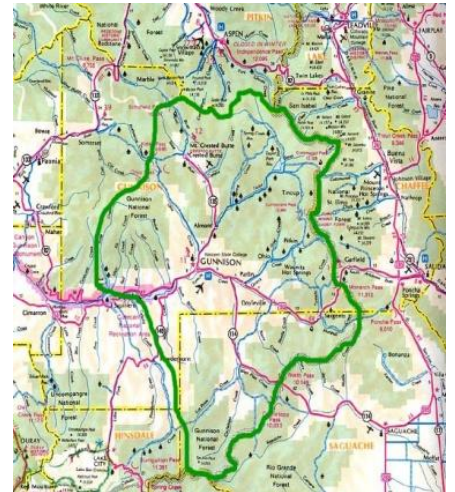
## Upper Gunnison River Watershed Greenhouse Gas Emissions Inventory

In 2007 and 2008 the four governments have funded a Greenhouse Gas Emissions Inventory for the Upper Gunnison River Watershed, to get a sense of our valleys contribution to greenhouse gas emissions and to understand where and how our energy is used. The valley's Office for Resource Efficiency was commissioned to carry out this inventory, which is summarized in this flyer. The full inventory is accessible online at [www.resourceefficiency.org](http://www.resourceefficiency.org).

### Scope and Methodology

The Temporary Energy Task Force decided to limit the inventory of greenhouse gases to the Upper Gunnison River Watershed (shown inside the green boundary of this map) rather than the whole county, for several reasons: 1) this is the area served by major energy suppliers; 2) the far western and northwestern parts of the County lie in different watersheds with different economies; and 3) the Upper Gunnison Watershed includes a part of the Saguache County, which is more linked to Gunnison County than the rest of Saguache County.

Greenhouse gas information was collected for four major communities within the Upper Gunnison River Watershed (UGRW): the incorporated communities of Gunnison, Crested Butte, Mt. Crested Butte, and the Unincorporated Areas outside of the communities. Aggregate information for the complete area (Unincorporated Area plus the three incorporated communities) was also compiled.



For each of the four reports plus the Aggregate Report, information was collected on the amount of greenhouse gases emitted through energy use in **Buildings** (heat and electricity), **Transportation** (gasoline and diesel), emissions from **Landfill Waste**, and **Agriculture/Other Uses** (fertilizers, cattle methane etc). Given the interconnected nature of modern life, it was necessary to draw some lines excluding energy uses that tie us to the larger world, such as the fuel that brings into the valley the visitors on which our economy depends.

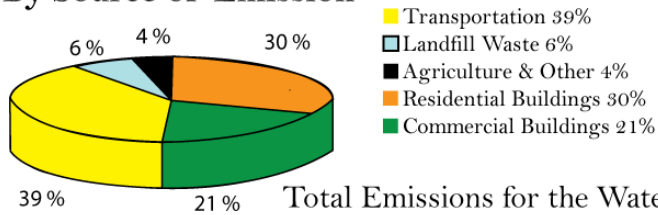
For each specific report there is a separate inventory for the Community and for the Government, on the assumption that the governments would have more detailed information, and would likely take a leadership role in reduction efforts. In both the Community and Government compilations, efforts were also made to give more detailed information for large public entities including the local schools and Western State College.

\*Imported resources refer not just to foreign oil and gas resources. All fossil-fuel resources used in the Upper Gunnison Watershed – even those produced elsewhere in Colorado – are imported. The bottom line is that these resources come from outside of the valley and require the export of money from the valley to pay for them, at prices beyond our control.

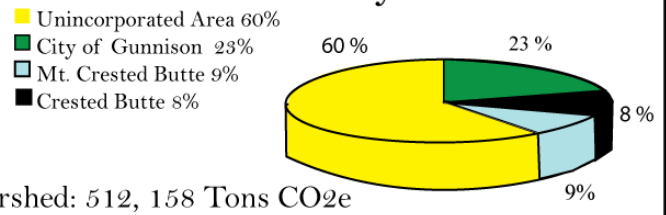
# An Overview of the Inventory Findings

## Aggregate Emissions for the Upper Gunnison River Watershed

### By Source of Emission



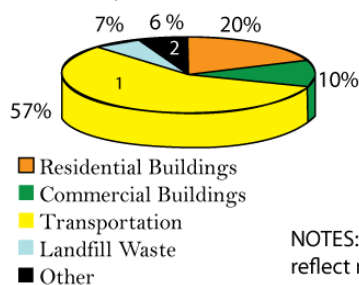
### By Location



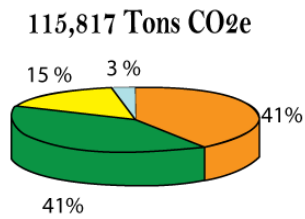
Total Emissions for the Watershed: 512, 158 Tons CO<sub>2</sub>e

### Emissions for each community by Source of emission

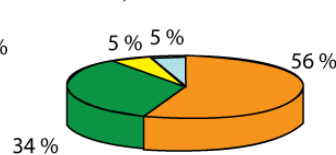
#### Unincorporated Area 307,447 Tons CO<sub>2</sub>e



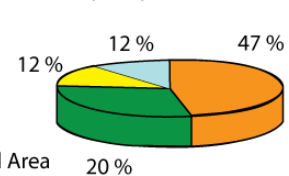
#### Gunnison 115,817 Tons CO<sub>2</sub>e



#### Mt. Crested Butte 47,930 Tons CO<sub>2</sub>e



#### Crested Butte 40,964 Tons CO<sub>2</sub>e



NOTES: 1 – The huge transportation-related emissions for the Unincorporated Area reflect not just the exurb-to-town miles of outlying residents but also all of the inter-community commuting. 2 – Methane emissions from livestock in the valley are the only large source of Ag & Other emissions.

### Inventory Analysis

The data shows us that **Buildings** and **Transportation** are the two areas with the biggest opportunities to reduce our carbon footprint. Conscious, improved energy efficiency will give the valley a good running start on reductions. ORE has developed an environmental decision making tool called "CROP" that can serve as a baseline format for reduction procedures. CROP is an acronym for Calculate-Reduce-Offset-Produce, and prioritizes energy and environmental impacts in decision making at all levels. It is a complete analysis that includes inventorying carbon emissions, establishing energy consumption and emissions reduction targets, and identifying cost/benefit analysis of energy efficiency strategies and renewable energy investments. For more on this, read the full report and attend the -

### Gunnison Valley Energy Summit, Sept. 10 & 11 2008 !!!

This milestone in the **Energy Action Planning Process** is convened by the valley's **Temporary Energy Task Force** - representing **Gunnison County, the City of Gunnison, and the Towns of Crested Butte and Mt. Crested Butte**. The valley-wide **Energy Summit** will bring valley residents together and out-of valley experts alike, to formally consider the Greenhouse Gas Emissions Inventory and to begin the process of devising conservation, efficiency and alternative-energy programs with incentives and policies that will move us towards both positive economic and ecological stewardship; that will be followed by a six-month process devising coordinated Energy Action Plans for the communities, and then several years to carry out the Energy Action Plans. The reward will be a healthier environment, a stronger economy, and more local energy independence and security. How can you contribute and learn about this process? Whether you are an individual, business-owner, or representative from an organization, trying to reduce skyrocketing energy costs, and you would like to share your ideas for our new energy future - all are welcome to the free Gunnison Valley Energy Summit. Contact the ORE office (970) 349-9673 for pre-registration due to limited seating or for volunteer opportunities. See you at the Gunnison Valley Energy Summit September 10th and 11<sup>th</sup>!